

# Year 1 Spring 2 Maths Activity Mat 2

## Section 1

Which day comes next?

Friday, Saturday, Sunday,

## Section 2

What number is five more than 6?

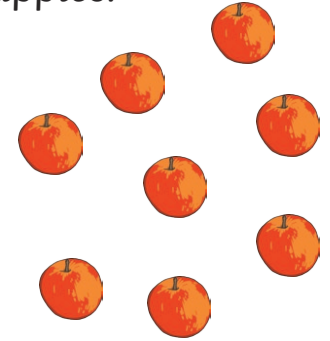
## Section 3

Fill in the missing number.

4, 6, 8, 10, , 14

## Section 4

Circle half of the apples.



## Section 5

$8 + 4 =$

$4 \times 2 =$

$8 - 5 =$

## Section 6

Tick the coins that would make 8p.

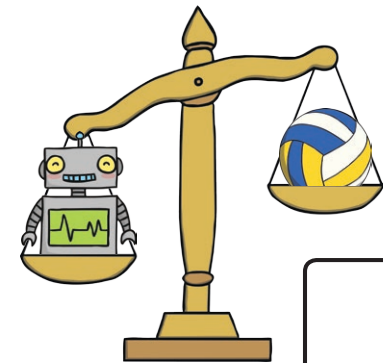


## Section 7

12 is two less than...

## Section 8

Which is heavier?



# Year 1 Spring 2 Maths Activity Mat 2

## Section 1

Which day comes first?

Tuesday,

Wednesday, Thursday

## Section 2

What number is seven less than 15?

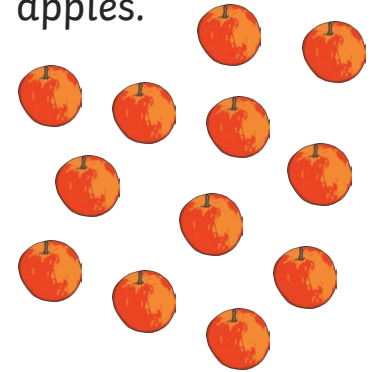
## Section 3

Fill in the missing number.

20, 18, 16, , 12

## Section 4

Circle half of the apples.



## Section 5

$11 + 6 = \square$

$4 \times 10 = \square$

$13 - 6 = \square$

## Section 6

Tick the coins that would make 17p.

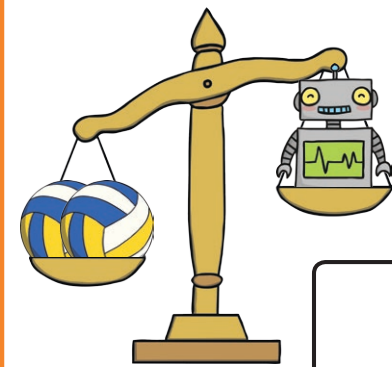


## Section 7

16 is five less than...

## Section 8

Which is heavier?



# Year 1 Spring 2 Maths Activity Mat 2

## Section 1

Which day is four days before Monday?

## Section 2

What number is seven less than 15?

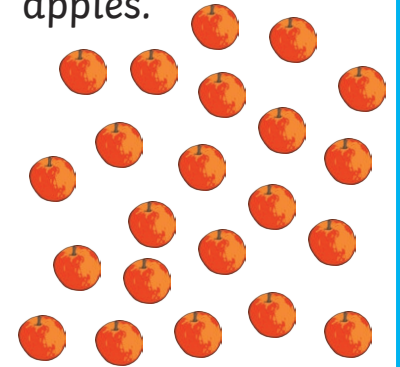
## Section 3

Fill in the missing number.

25, 30, 35, ,  
45, 50

## Section 4

Circle half of the apples.



## Section 5

$$21 + 25 = \square$$

$$7 \times 5 = \square$$

$$21 - 15 = \square$$

## Section 6

Tick the coins that would make 28p.



## Section 7

22 is nine less than...

## Section 8

Which is heavier, a ball or a robot?



# Year 1 Spring 2 Maths Activity Mat 2 Answers

## Section 1

Which day comes next?

Friday, Saturday, Sunday,

Monday

## Section 2

What number is five more than 6?

11

## Section 3

Fill in the missing number.

4, 6, 8, 10, 12, 14

## Section 4

Circle half of the apples.

4 apples circled.

## Section 5

$8 + 4 = 12$

$4 \times 2 = 8$

$8 - 5 = 3$

## Section 6

Tick the coins that would make 8p.

5p, 2p and 1p ticked.

## Section 7

12 is two less than...

14

## Section 8

Which is heavier?

robot

# Year 1 Spring 2 Maths Activity Mat 2 Answers

## Section 1

Which day comes first?

**Monday**

Tuesday,

Wednesday, Thursday

## Section 2

What number is seven less than 15?

**8**

## Section 3

Fill in the missing number.

20, 18, 16, **14**, 12

## Section 4

Circle half of the apples.

**6 apples circled.**

## Section 5

$11 + 6 =$  **17**

$4 \times 10 =$  **40**

$13 - 6 =$  **7**

## Section 6

Tick the coins that would make 17p.

**10p, 5p and 2p ticked.**

or

**10p, 5p and 2 x 1p ticked.**

## Section 7

16 is five less than...

**21**

## Section 8

Which is heavier?

**balls**

# Year 1 Spring 2 Maths Activity Mat 2 Answers

## Section 1

Which day is four days before Monday?

Thursday

## Section 2

What number is seven less than 15?

8

## Section 3

Fill in the missing number.

25, 30, 35, **40**,  
45, 50

## Section 4

Circle half of the apples.

11 apples circled.

## Section 5

$$21 + 25 = \mathbf{46}$$

$$7 \times 5 = \mathbf{35}$$

$$21 - 15 = \mathbf{6}$$

## Section 6

Tick the coins that would make 28p.

10p, 10p, 5p, 2p and 1p ticked.

or

10p, 3 x 5p, 2p and 1p ticked.

## Section 7

22 is nine less than...

31

## Section 8

Which is heavier, a ball or a robot?

robot